

- Solid state electronic module
- Simple two-button operation
- Variable lamp brightness
- Lamp load up to 250W
- Variable fan speed
- Motor load up to 250W
- Automatic fan speed mode
- High-temperature shut down
- Universal power supply
- Two glamour switch inputs
- Safe low voltage/current
- Status LED output

## ▶ OPERATION

Most cooker hoods have a lamp and three fan speed settings, usually operated by slide switches or push buttons. While more than three fan speeds is desirable, having more than four or five buttons can be confusing. Simple appliances require that the fan motor has separate windings or taps for each speed selection, making the motor more bulky and expensive for more than three speeds.

The intelligent cooker hood control uses only two tact switch buttons, one for the fan and one for the lamp. Up to ten fan speeds settings are available, so the optimum extraction rate and noise level can be configured to suit the requirements - each button press increases the speed.

The lamp brightness can be adjusted, allowing high intensity halogen lamps to be used whilst cooking, but reduced intensity for ambient lighting or to create a particular mood in a room. Each button press increases the lamp brightness, and the electronic 'soft start' feature prolongs the working life of halogen bulbs.

Additionally, as an option, the control can sense the rising temperature within the hood canopy, and automatically switch on the fan when cooking starts.

The control can automatically shut off the fan after one hour. A built-in safety feature can shut off the fan if dangerously high temperatures are reached.

► SPECIFICATIONS

Body / Base	Aluminium Extrusion/plate
Terminals	Copper alloy
Flame retardancy	UL94V2
RoHS compliant	Yes
Operating voltage	88 to 288 Volts AC
Supply frequency	50Hz or 60Hz
Current rating (Lamp)	250W 1.0A Maximum
Current rating (Fan)	250W 1.0A Maximum
Operating temperature	-20°C to +70°C

► FUNCTION

Programmable features:  
  
Number of fan speeds  
Auto-on while cooking  
Auto-off after cooking  
  
Number of lamp intensities  
Discrete steps or variable  
Soft start for halogen lamp

► DIMENSIONS

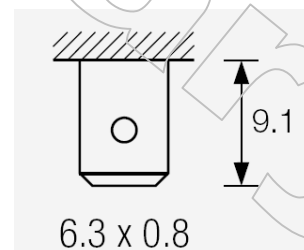
PCB Only  
75mm(l) x 50mm(w) x 20mm(h)

Mounting plate  
118mm(l) x 75mm(w) x 25mm(h)  
Fixing centres 103mm

Extruded case  
118mm(l) x 54mm(w) x 23mm(h)  
Fixing centres 103mm

► TERMINALS

Standard fast-on tab terminals



Optional right-angle or straight tabs



Arcoelectric Ltd.,  
Central Avenue,  
West Molesey, Surrey  
England KT8 2RF

Tel: +44 (0)20 8979 3232  
Fax: +44 (0)20 8979 2565

[www.arcoelectric.co.uk](http://www.arcoelectric.co.uk)

Arcoelectric Ltd is part of the Elektron PLC group of companies

Revision 1 02/2006      E&OE      Copyright © 2006 Arcoelectric

tel: +44 (0)20 8979 3232    • **Arcoelectric**    • email: [info@arcoswitch.co.uk](mailto:info@arcoswitch.co.uk)